

GOES VR

TLV ConTech & PropTech

Constructing Tomorrow's
Sustainable Buildings

November 24-25 / 2020 / Israel



Partner:

BuiltUp Ventures

In Cooperation With:

I N F R A L A B





Contents

The Israel Export & International Cooperation Institute	3
<hr/>	
The Foreign Trade Administration	4
<hr/>	
Index by Company	5
<hr/>	
Index by Category	12
<hr/>	
Company Profiles	15
<hr/>	



THE ISRAEL EXPORT &
INTERNATIONAL COOPERATION INSTITUTE

ISRAEL EXPORT INSTITUTE

Israel, the Startup Nation, is becoming one of the world's leading hubs for startups and technologies that are aiming to disrupt the construction and real estate industries towards the next revolution. Over the past five years, the number of Israeli startups for these domains has increased by a fantastic 800% and has reached more than a 3000% rise in investments.

Ranging from AI, AR&VR applications, automation, robotics, smart buildings and innovative construction, to user experience, management platforms and sustainability, the Israel ConTech & PropTech ecosystem is a melting pot of innovative technologies improving the entire value chain of construction and property industries.

Bridging between innovative startups, construction and real estate market players, investors and industry experts, Israel's ConTech & PropTech ecosystem is eternally seeking new opportunities, and The TLV conTech & propTech 2020 virtual event is where properties, construction and technology meet.

Noa Aharoni,

Manager, Cleantech & Construction-Tech Sector
+972(3)514 2846 / Aharoni@export.gov.il

Ron Brum

Marketing Coordinator, Cleantech & Construction-Tech Sector
+972(3)514 2976 / Ronb@export.gov.il



Ministry of Economy and Industry
Foreign Trade Administration

THE FOREIGN TRADE ADMINISTRATION





The Foreign Trade Administration (FTA) at the Israeli Ministry of Economy and Industry manages and supports Israel's international trade and trade policy. Through our headquarters in Jerusalem together with over 40 economic and trade missions in key financial centers throughout the world, the FTA promotes Israel's economy worldwide.

Israel's economic and trade missions are at the forefront of the Israeli government's efforts to boost our industries in foreign markets. Our team of highly experienced economic representatives and business consultants provide a wide range of services to Israeli companies and to the international business community.

Michal Niddam Wachsman,
Director
China Department
Co-Director TLV Con&PropTech

Tel: +972-74-7502591
Cell: +972-53-2804441
Email: Michal.Nidam@economy.gov.il
www.itrade.gov.il

Index by Company

Company Name	Category	Page
Alkemy 	● Advanced Materials and Building Methods	16
Alumeshet 	● Energy Efficiency (Lighting & Air-Conditioning)	17
Aura Smart Air 	● Applications for Indoor Environments ○ Indoor Air Quality	18
Buildots 	● Planning and Design ● Site inspection ● Project Management and Collaboration Platforms	19

Index by Company

Company Name	Category	Page
Chakratec 	<ul style="list-style-type: none"> ○ Electric Vehicle Charging Infrastructure ○ Energy storage ● Property and infrastructure management and maintenance ● Energy Efficiency (lighting & air-conditioning) 	20
Constru 	<ul style="list-style-type: none"> ● Project Management and Collaboration Platforms 	21
ConWize 	<ul style="list-style-type: none"> ○ Project cost estimating & bidding automation ○ Marketplaces ● Project management and collaboration platforms ● Planning and Design 	22
Criaterra Innovations 	<ul style="list-style-type: none"> ● Advanced Materials and Building Methods ● Applications for Indoor Environments ○ Green Retrofit Materials 	23

Index by Company

Company Name	Category	Page
Datamate 	<ul style="list-style-type: none"> ● Safety ● Site Inspection ● Project Management and Collaboration Platforms 	24
ECONcrete Tech 	<ul style="list-style-type: none"> ● Property and Infrastructure Management and Maintenance ○ Ecological Coastal Technologies & Engineering 	25
EcoTech 	<ul style="list-style-type: none"> ● Advanced Materials and Building Methods ● Applications for Indoor Environments 	26
Elencon Systems 	<ul style="list-style-type: none"> ● Energy Efficiency (Lighting & Air-Conditioning) 	27
EVA 	<ul style="list-style-type: none"> ● Advanced Materials and Building Methods 	28
Genda 	<ul style="list-style-type: none"> ● Safety ● Project Management and Collaboration Platforms ● Location-Based Services 	29

Index by Company

Company Name	Category	Page
GreenVibe 	<ul style="list-style-type: none"> ● Site inspection ● Advanced Materials and Building Methods 	30
Holoarch 	<ul style="list-style-type: none"> ● Site Inspection ● Location-Based Services ● Applications for Indoor Environments 	31
Just Manage 	<ul style="list-style-type: none"> ● Planning and Design ● Site Inspection ● Project Management and Collaboration Platforms 	32
LightYX 	<ul style="list-style-type: none"> ● Site Inspection ● Drones & Robotics 	33
Maganeet 	<ul style="list-style-type: none"> ● Advanced Materials and Building Methods 	34
Nano Z Coating 	<ul style="list-style-type: none"> ● Advanced Materials and Building Methods ● Property and Infrastructure Management and Maintenance 	35

Index by Company

Company Name	Category	Page
Okibo 	<ul style="list-style-type: none"> ● Advanced Materials and Building Methods ● Drones & Robotics 	36
RadGreen 	<ul style="list-style-type: none"> ● Property and Infrastructure Management and Maintenance ● Applications for Indoor Environments ● Energy Efficiency (Lighting & Air-Conditioning) ○ Indoor Air Quality 	37
Resonai 	<ul style="list-style-type: none"> ● Real Estate Marketing Solutions ● Location-Based Services ● Applications for Indoor Environments ● Property and Infrastructure Management and Maintenance 	38
RobyAI 	<ul style="list-style-type: none"> ● Project Management and Collaboration Platforms ● Property and Infrastructure Management and Maintenance ● Real Estate Marketing Solutions 	39
Safeguard 	<ul style="list-style-type: none"> ● Safety ● Project Management and Collaboration Platforms 	40

Index by Company

Company Name	Category	Page
Solight 	<ul style="list-style-type: none"> ● Energy Efficiency (Lighting & Air-Conditioning) 	41
Sowillo Energy 	<ul style="list-style-type: none"> ● Property and Infrastructure Management and Maintenance ● Applications for Indoor Environments ● Energy Efficiency (Lighting & Air-Conditioning) 	42
Swapp  SWAPP	<ul style="list-style-type: none"> ● Planning and Design ● Real Estate Marketing Solutions 	43
Syracuse 	<ul style="list-style-type: none"> ● Drones & Robotics 	44
Trusstor  TRUSTOR	<ul style="list-style-type: none"> ● Safety ● Project Management and Collaboration Platforms ● Location-Based Services 	45

Index by Company

Company Name	Category	Page
Visitt 	● Project Management and Collaboration Platforms	46
	● Property and Infrastructure Management and Maintenance	
	● Real Estate Marketing Solutions	
Wint 	● Property and Infrastructure Management and Maintenance	47
	● Energy Efficiency (Lighting & Air-Conditioning)	
Zero Energy Solutions 	● Property and Infrastructure Management and Maintenance	48
	● Applications for Indoor Environments	
	● Energy Efficiency (Lighting & Air-Conditioning)	
	○ Clean-Tech	

Index by Category

Category	Company
● Advanced Materials and Building Methods	<ul style="list-style-type: none">• Alkemy• Criaterra• Ecotech• EVA• Maganeet• Nano Z Coating• Okibo
● Applications for Indoor Environments	<ul style="list-style-type: none">• Aura Air• Criaterra• Ecotech• Holoarch• RadGreen• Resonai• Sowillo Energy• Zero Energy Solutions
● Drones & Robotics	<ul style="list-style-type: none">• Datumate• LightYX• Okibo• Syracuse
● Energy Efficiency - Lighting & Air-Conditioning	<ul style="list-style-type: none">• Alumeshet• Chakratec• Elencon• RadGreen• Solight• Sowillo Energy• WINT• Zero Energy Solutions

Index by Category

Category	Company
● Location-based services	<ul style="list-style-type: none">• Genda• Holoarch• Resonai• Trusstor
● Planning and Design	<ul style="list-style-type: none">• Buildots• ConWize• Just Manage• Resonai• Swapp
● Project Management and Collaboration Platforms	<ul style="list-style-type: none">• Buildots• Constru• ConWize• Datumate• Genda• Just Manage• Nano Z Coating• Resonai• Roby.ai• Safeguard• Trusstor• Visitt

Index by Category

Category	Company
● Property and Infrastructure Management and Maintenance	<ul style="list-style-type: none">• Alkemy• Chakratec• EConcrete• Nano Z Coating• RadGreen• Roby.ai• Sowillo Energy• Visitt• WINT• Zero Energy Solutions
● Real Estate Marketing Solutions	<ul style="list-style-type: none">• ConWize• Resonai• Roby.ai• Swapp• Visitt
● Safety	<ul style="list-style-type: none">• Buildots• Datumate• Genda• Safeguard• Trusstor
● Site Inspection	<ul style="list-style-type: none">• Datumate• Holoarch• Just Manage• LightYX• Resonai

COMPANY PROFILE





Construction Products Made Up with 100% Recycled PE Plastic

Alkemy

www.kb-recycling.com

- Advanced Materials and Building Methods

Company Profile

Alkemy developed an unseen technology and know-how to circularly recycle highly polluted PE plastic straight into qualitative and competitive end products. Alkemy is a leading Israeli company offering advanced construction plastic products and solutions for utilities and industrial sectors through extensive R&D & manufacturing facilities.

Product Description

Alkemy developed 4 types of products:

1. RHINO: Sealing robust protection for vertical systems & water impermeability
2. ARMADILLO: Impact and puncture floor protection
3. CRICKET: Root penetration protection including but not limited to: Construction, pavements, green roofs, canals and reservoirs, infrastructures channels
4. ELEPHANT: Gas impermeability (Radon, CO2 and methane).



ALUMESHET USA

Intelligent building envelopes

A Winnig Formula of Innovation & High Performance

Alumeshet

www.alumeshet-usa.com

- Energy Efficiency
(Lighting & Air-Conditioning)

Company Profile

Alumeshet is a leading provider of building enclosures, specializing in engineering, developing, manufacturing, and executing facade systems. Customized solutions planned down to the last detail that create smart building envelopes.

Product Description

Climatic double-skin curtain wall: Alumeshet's Climatic Double-Skin Façade system maximizes transparency, saves energy, and ensures total user comfort. An Israeli first, this curtain wall system is uniquely adapted to warm climate conditions. It combines dynamic shading and maximum transparency with full architectural flexibility, minimal maintenance requirements, and complete control. The dynamic architectural design, adapted to each project, enables significant savings in energy consumption for air conditioning and lighting. It achieves optimal conditions through thermal and acoustic insulation, natural light, and glare reduction. Items for office towers, luxury residences, and public buildings. We are proud to provide our customers with a wide range of exceptional architectural solutions in aluminum, steel, and glazing. Leveraging 40 years of leadership in the Israeli facades market, we have recently expanded to serve additional regions, focusing in North America.



[REGISTR NOW >](#)

The World's Smartest Air Management Platform

Aura Smart Air

www.auraair.io

● Applications for Indoor Environments

○ Indoor Air Quality

Company Profile

In a world where sustainability plays an important role in our daily lives, Our Vision is for people to breathe cleaner air. The Aura brand will inspire people to understand, learn and become aware of the air they breathe daily. Our Mission is to be an air quality authority by providing knowledge, cutting-edge technologies and reinventing air quality standards.

Product Description

An all-in-one indoor air purification and quality intelligence system, Aura filters and disinfects indoor air through a unique 4 stage purification process while vigilantly monitoring its quality in real-time. When hazards are detected, Aura alerts you immediately, providing crucial intelligence as to the origin of the problem, solutions of how to rectify it, and alarms if immediate action or evacuation is required. While keeping you informed of the conditions inside your home, Aura also monitors outdoor air quality, providing you a holistic picture of today and what's to come tomorrow.





Digitizing Construction Process Management with Simple Off-The-Shelf Cameras, BIM and AI Based Technology

Buildots

www.buildots.com

- Planning and Design
- Site inspection
- Project Management and Collaboration Platforms

Company Profile

Buildots is an innovative construction tech start-up creating the equivalent of a mission control room for construction sites. Bringing together AI and wearable hardware, Buildots technology creates seamless construction process visibility and fully digitised construction workflows with the aim of optimising processes, minimising delays and avoiding budget overruns.

Product Description

The AI-based technology can automatically analyse data captured by off-the-shelf wearable cameras, tracking the progress of every construction activity. Buildots computer vision engine is capable of tracking the indoor-position, so that a person can walk freely with the camera without interrupting his on-site daily routine. The up-to-date construction data collected is compared against original design models (BIM) and schedules to provide accurate visibility of the project's status.

This unique data is then presented to the customer through our web application providing various dashboards with detailed reporting on element level status, specific subcontractors work status, errors report, loose ends report and different progress reports.



Chakratec's Kinetic Energy Storage Technology Enables Fast and Ultra-Fast EV Charging Anywhere

Chakratec

www.chakratec.com

- Electric Vehicle Charging Infrastructure
- Energy storage
- Property and infrastructure management and maintenance
- Energy Efficiency (lighting & air-conditioning)

Company Profile

Chakratec is global energy solutions provider and operator based in Israel, deploying breakthrough proprietary kinetic energy storage technologies. Our sustainable, cost-effective system enables a wide range of “grid edge” applications from high-power EV fast-charging through peak shaving to grid stabilization and beyond.

Product Description

Chakratec provides optimal solutions for the EV charging eco-system, circumventing the problem of insufficient power in the grid. This is done by applying the Kinetic Power Booster (KPB) based on our Kinetic Energy Storage system. Our multi-patented technology stores the electricity as kinetic energy in a fast-rotating flywheel. This technology presents two major advantages:

- Unlimited high-power charge and discharge cycles (more than 200,000) without degradation over the full system lifetime of 20 years
- The non-chemical flywheel is a sustainable and reusable system, as opposed to toxic and polluting chemical batteries.





Superpower Your Project Teams to Gain Total Control on Your Job Site

Constru

www.constru.ai

- Project Management and Collaboration Platforms

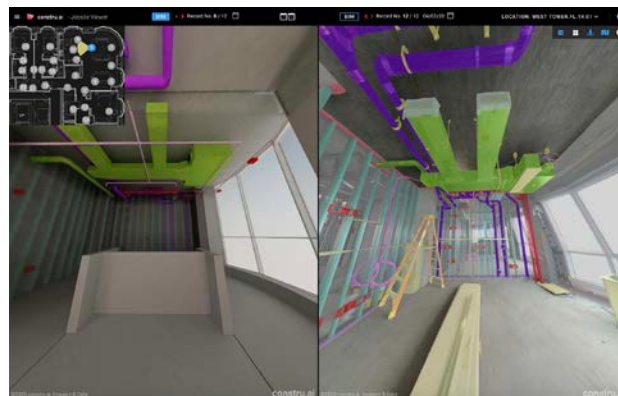
Company Profile

Constru develops a breakthrough computer vision technology to deploy superhuman engineers on Jobsite, monitoring every job, on every wall, throughout the construction process.

Product Description

The system, designed for owners and contractors, automatically tracks project progress, and identifies discrepancies. The process is cross-checking the information extracted from spherical images taken on the Jobsite and the actual plans.

The system enhances the fidelity of production data through high-frequency quantifiable progress and discrepancies monitoring while tracking multiple trades from partitions to MEP in high resolution.





We Are Helping to Estimate Projects More Accurate and Faster to Support Better Execution

ConWize

www.conwize.co.il

- Project cost estimating & bidding automation
- Marketplaces
- Project management and collaboration platforms
- Planning and Design

Company Profile

ConWize is a SaaS platform for Owners, General contractors and Subcontractors. We are helping to simplify bidding processes, improve efficiency by reducing manual and routine work and to collaborate faster. The platform is one of the most advanced cloud-based solutions for estimating & bidding automation in the industry. Our plan is to revolutionize cost estimating by using AI algorithms.

Product Description

END-TO-END SOLUTION FOR PROJECT COST ESTIMATING:

Bidding automation allows new level of collaboration with contractors, workflow automation creates structured estimating process, advanced estimating tools minimizing human errors and saving time, indirect costs and profit loading tools, risk management – estimation KPIs analysis, innovative project estimating powered by AI (in stealth mode)

FROM ACCURATE ESTIMATE TO SUCCESSFUL EXECUTION:

Pre-contracts management with contractors - full process: planning, sending invites to bid, digital bidding, quotes compare & analysis, budget analytics, contracts templates management, contract digital signature

Visual project schedule management & Cash Flow

Instant and effortless project transition to execution phase – extracting project budget by a single click and creating one language between tender and execution department, all tender information is available for project manager in the platform - no more digging through dozens of excel files



CRIATERRA

EARTH TECHNOLOGIES

Innovative Circular Economy Solutions in Construction

Criaterra Innovations

www.criaterra.com

- Advanced Materials and Building Methods
- Applications for Indoor Environments
- Green Retrofit Materials

Company Profile

Criaterra's technology demonstrates that it is possible to dramatically reduce GHG emissions in the production process for construction materials without compromising on strength and constructive quality. This is achieved through a complete redesign of the production process which maintains the physical properties of the raw materials. Criaterra's products are fully recyclable, with low emissions and high energy conservation.

Product Description

Criaterra combines unique mixtures and a sustainable production process to create regenerative green-building products. The materials meet all relevant construction standards.

Criaterra's unique algorithm allows expedited engineering of mixture compositions. Digital techniques optimize constructive features such as strength and thermal /acoustic insulation, based on analyzing the flow of materials and their unique parameters and resistance.

Our product line of indoor tiles will be expanded to include wet room tiles and outdoor cladding. They add value through their deep sustainability and through their superior thermal properties that will improve the energy efficiency of buildings – a key goal in green construction.





Datumate Develops Innovative Site Monitoring and Data Analytics Solutions for The Infrastructure Construction Industry

Datumate

www.datumate.com

- Safety
- Site Inspection
- Project Management and Collaboration Platforms

Company Profile

Datumate is committed to the digital transformation of infrastructure construction projects, and our core competencies are rooted in a dedicated team of construction and high-tech professionals.

We develop software that utilizes data analytics, machine learning, computer vision, and drone imagery. DatuBIM, our construction data analytics platform, dramatically optimizes project delivery, and helps our customers stay on schedule and control budgets.

Product Description

DatuBIM improves project management and accelerates infrastructure construction project delivery through continuously updated, drone-based 3D models of the construction sites. Automatic 3D model generation and advanced analytics drive transparency, accountability, and efficiency of all teams involved. Using the DatuBIM, our customers compare plans to 3D models to uncover deviations promptly, before they turn into costly rework. DatuBIM supports data-driven collaborative decision-making and allows for accurate tracking of project progress, sub-contractors' supervision, and optimized project management. As a cloud-based platform, DatuBIM gives teams remote access to insights when and where needed, reduces time-on-site, keeps workers safe, and increases productivity.



ECOncrete has Developed The World's First Proven Bio-Enhancing Concrete Products for Coastal and Marine Construction

ECOncrete Tech

www.econcretetech.com

- Property and Infrastructure Management and Maintenance
- Ecological Coastal Technologies & Engineering

Company Profile

ECOncrete offers a suite of high performance environmentally sensitive concrete solutions that enhance the biological and ecological value of urban, coastal, and marine infrastructure while increasing their strength and durability. The core innovation is a suite of science-based bio-enhancing concrete admixtures, complex surface textures, and 3D designs that act in synergy to increase the ecological value of breakwaters, seawalls, pier piles and alike, while improving their structural performance.

Product Description

Rising seas, record-breaking storms, and accelerated waterfront development mean more concrete coastal protections. By replacing natural habitats with CO₂-emitting-emitting concrete, construction threatens fragile shallow water ecosystems and accelerates climate change.

ECOncrete revolutionizes coastal protection by bridging structural integrity with ecosystem benefits, harnessing nature's processes to build stronger, carbon-storing coasts. Now decision-makers, engineers, contractors, and landscape architects can build better for people and planet: deploying technologies that are more durable, have a longer lifespan, improve water quality, and promote biodiversity.



Ecotech

Green Acoustic and Thermal Insulation Made From Recycled and Recyclable Rubber

Ecotech

www.ecotrc.com

- Advanced Materials and Building Methods
- Applications for Indoor Environments

Company Profile

Ecotech produces the highest-grade acoustic and thermal insulation made from green recycled and fully recyclable rubber, which has 6 tons of Carbon Credits per each ton of product. TUV certified as green building material - Oxygen index, fuming, acoustic and thermal qualities.

Product Description

Using a newly developed proprietary rubber compound based on green recycled and fully recyclable rubber material, Ecotech is able to produce the highest-grade insulation for today's and tomorrow's market – EcoInsul, a product that has a positive carbon footprint.

EcoInsul can be reinstalled over and over again, giving it another great value. There is absolutely no hazard in removing and reinstalling EcoInsul sheets, since no protective gear is needed to work with it.

EcoInsul comes as a single 2.5-3-millimeter rubber sheet with the size of 122 cm x 242-262 cm.

EcoInsul can be used for Floor, Wall, Building, Technical infrastructure insulation.





Elencon AI System for HVAC Energy Efficiency

Elencon Systems

www.elencon.com

- Energy Efficiency (Lighting & Air-Conditioning)

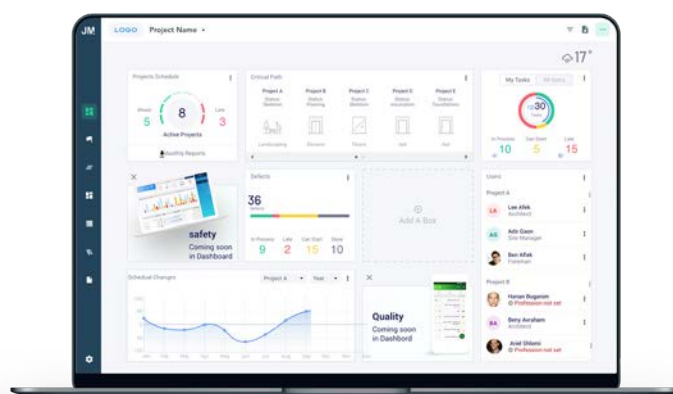
Company Profile

We are a team of dedicated AI developers, mathematicians and business professionals in the energy efficiency field. Based in Israel, we have successfully developed and patented a unique approach to energy efficiency in large buildings.

Product Description

The Elencon CSMS optimizes the Chiller's operation, which today is manually set to meet extreme needs, to fit the actual, varying, conditions, 24/7/365.

By doing so, it achieves significant savings of up to 30% without compromising user comfort, in a software based, easy to control and install, package.





Activating Waste to Value in Building Materials

EVA

www.evagreentech.com

- Advanced Materials and Building Methods

Company Profile

An Israeli start up founded about a year and half ago. Filed a patent after successful proof of concept. Secured pilots agreements with the biggest industry players in Israel. Submitting Horizon2020 application jointly with industry partners in Europe.

Product Description

We are developing a new supplementary cementitious material, partially replacing cement material. We do this by implementing our patent pending technology for activation of waste material. Reducing costs and carbon footprint of the cement and concrete industries without compromising quality.





Genda is a Platform Designed for Construction Site Managers to Enhance Their Real-Time Process Clarity Through Data Generation, Analysis & Visualization

Genda

www.gendatech.com

- Safety
- Project Management and Collaboration Platforms
- Location-Based Services

Company Profile

Genda automates construction workflow management by generating and analyzing real-time project data. We generate valuable field data, integrate to the relevant data sources and provide game-changing insights to construction managers. We are based in Tel-Aviv, Israel and have several paying customers in the US.

Product Description

Genda provides construction site managers a clear understanding of where time and resources are wasted on their projects and how to eliminate them. We have developed a cost-effective, easy to deploy monitoring solution for labor, equipment and material that requires no pre-preparation and maintenance. We integrate into existing software and analyze the data to understand what resources are available on-site, what tasks are being done and their status and where site managers should focus their attention to improve productivity and safety.

Following COVID-19 outbreak, we have released social density and contact tracing features that allow construction sites to keep on running smoothly and efficiently.





Fundamentally Changing the Concrete Strength & Readiness Measurement Process

GreenVibe

www.greenvibe.io

- Site inspection
- Advanced Materials and Building Methods

Company Profile

GreenVibe is a technology company that develop cutting edge – user friendly solution for the construction and concrete industry. Our mission is to become the leader of concrete sensing & data technologies, by developing the best-in-class, real-time remote sensors based on cloud data analytics in order to improve & accelerate process and increase productivity.

Product Description

Our unique sensors are easily placed inside the concrete pours on the construction site, providing real-time measurements of the concrete strength, humidity, temperature and resistivity for a period of several months.





Tracking Real-World Progress Against BIM Modeling

Holoarch

www.holoarch.tech

- Site Inspection
- Location-Based Services
- Applications for Indoor Environments

Company Profile

Holoarch is developing a unique Augmented Reality Smart solution that views 3D modeling (BIM) over actual physical site view for Construction Inspection. a must have solution that is willing to decrease the “rework” costs for construction companies.

Product Description

By using Holoarch ARspecter AR Smart solution , onsite sensors and cloud based sharing, inspector on the construction site enjoy a very accurate/fast tool that give them the ability to detect building error in early stages and report it back to the office by snapshot, video and voice reports all in real time over the internet.

- Fast & easy construction site inspection with 2 cm Accuracy!
- Real Time Site-Office communication using image Snapshot, Video recording and voice messages.
- All Automatic Standalone Solution, just turn on , choose project and start inspection.



Shortening Construction Projects Schedule by Simplifying The Construction Process

Just Manage

www.justmanage.com

- Planning and Design
- Site Inspection
- Project Management and Collaboration Platforms

Company Profile

Shorten construction schedule and better align project team and with our JM dedicated, real-time and dynamic, scheduling and synchronization management platform.

Product Description

Just Manage Schedule Management allows you to manage multiple projects with the same methodology, overcome data loads and keep up with every project different challenges.

We have witnessed the pain of a static and generic Gantt, Just Manage innovative solution empowers construction companies to make a quantum leap in their project management capabilities:

1. Create an optimal scheduling plan in a click of a button
2. Shorten construction schedule and ensure meeting the project original timeline
3. Fully align project team and sub-contractors Manage site resources dynamically



[REGISTR NOW >](#)

Empowering Construction Workers by Allowing Them to Build Right, First Time

LightYX

www.lightyx.com

- Site Inspection
- Drones & Robotics

Company Profile

LightYX was founded by 3 experienced engineers that have previously held senior roles in global technology companies. LightYX is developing a unique robotic system that projects an Augmented Reality of construction blueprints using a laser onto any surface with an accuracy of millimeters. The system has the ability to highlight quality control issues without being intrusive to the workers on-site using advanced machine vision technics.

Product Description

LightYX has developed a robotic system, the LightYX BeamerOne™, that projects 2D/3D blueprints on to the construction surfaces using an accurate laser. Now, a construction worker can see the blueprint, to scale, on the work surface, which allows him to quickly understand what to do with almost zero mistakes. The LightYX BeamerOne™ also allows the worker to detect mismatches between the digital plan and the “as built” and easily fit the projected plans to the “as built”, using a mobile app.



Temporary Protection Solutions for Finished Goods Materials During Construction

LightYX

www.mageneet.com

- Advanced Materials and Building Methods

Company Profile

We are a business that specializes in manufacturing premium temporary, and multi use protection products for floor and interior finishes during the building of homes, office construction and refurbishment projects. Mageneet's patented products provide a two layered protective cover that reduces the risk of damage to finished flooring, doors, stairs, hence reducing the cost and delay caused by replacement or repair of elements. The benefit exceeds the cost with Mageneet products.

Product Description

Mageneet Sheets Our Flagship- Mageneet's wide range of advanced floor protection sheets are specifically designed for end to end protection and the best part is that it can be easily stored and reused at your convenience. In addition, we carry products specifically designed for all areas of a building or home such as steps or stairs and of course doors as well. We stand behind our product; we guarantee protection and perfection. Our goal is to provide a smile to every company that carries our Brand.





Nano Technology Manufacturer

Nano Z Coating

www.nanoztec.com

- Advanced Materials and Building Methods
- Property and Infrastructure Management and Maintenance

Company Profile

Nano Z Coating is one of the few and leading companies in Israel and abroad that specifically deals in the design of pure nanometric coating materials, precisely modified for their particular purposes. Our goal is to integrate this seemingly impossible, breakthrough technology at a reasonable price. The raw materials used are of the highest quality, based on exclusive, unique, patent-protected technologies, utilizing knowledge and innovative methods specifically developed for the production of nano-products.

Product Description

NANO-Dust-Control-Eco-Platform

ST1-Nano Stone Invisible hydrophobic water repellent coating preventing water absorption in concrete stone marble.

GL1-Nano Glass&Ceramics coating for interior uses Invisible water repellent barrier prevents water stains&limescale.

GL2-Nano-Glass for exterior glass&solar panels Invisible water repellent barrier prevents limescale water stains less dust&easy bird dropping cleaning.

CBS700-Barrier coating against dirt&stains cement fluids Transparent concrete casting shield.

ESP700-Nano anti Corrosion&Photocatalytic Coating Certified and approved by NACE USA.

TEX11- Nano Leather&Suede Invisible hydrophobic barrier water repellent Liquids and stains protection.

Q10- Underwater Seal&lock Unique technology doesn't require emptying the pool





Smart Robots for Autonomous Finishing Works in Construction Sites

Okibo

www.okibo.com

- Advanced Materials and Building Methods
- Drones & Robotics

Company Profile

Okibo is aiming to revolutionize the construction industry by applying smart robotic solutions in construction sites. We are developing a robotic platform capable of moving freely inside construction sites while automating a wide range of tasks. Our first robotic applications are drywall finish tasks : joints taping, plastering, sanding and painting. All performed fully autonomously with an industrial grade robotic accuracy.

Product Description

Our product, is an autonomous wall and ceiling finishing robot with the following core technology:

- Mobile, battery operated robotic system with 6 degrees of freedom manipulator (total of 9 DoF)
- AI guided 3D scanning algorithm, that creates a real time 3d model of a surface/structure
- Smart path planner that enables fully autonomous operation of the robot with no pre- programming.

This technology allows us to perform a very accurate continuous work over large surfaces without a human touch.



Environmental Awareness and Control Solution for Commercial Buildings

RadGreen

www.radgreen.com

- Property and Infrastructure Management and Maintenance
- Applications for Indoor Environments
- Energy Efficiency (Lighting & Air-Conditioning)
- Indoor Air Quality

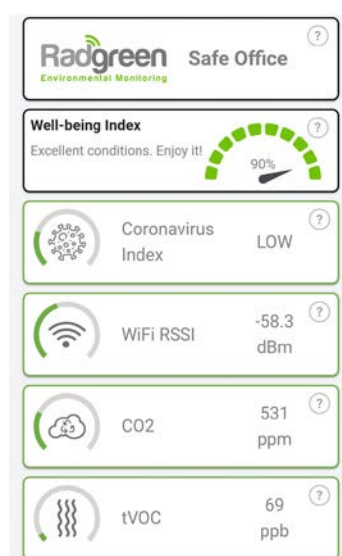
Company Profile

Radgreen established in 2016, has developed EMG (electromagnetic) sensors, a comprehensive sensing device, and cloud-based software for environmental data analysis. The company applied for 2 patents, and won the Innovation authority grant, twice. RadGreen systems use in 1st tier customers. The company has distributors in Italy and France.

ISO 9001-2015 standard accredited, member of the green building council.

Product Description

RadGreen promotes safety, health, environmental awareness, and energy efficiency with its innovative IoT sensor and analytics cloud-based solutions. Detecting air pollution, noise, radiation, and thermal comfort, indoor and outdoor, all in a unified, compact device, analyzing the data, and providing detailed and ongoing alerts & diagnostic recommendations for commercial buildings FM and corporates operation managers





Resonai's Vera Transforms Buildings Into Digitized Ecosystems to Leverage Applications for Creating Business Efficiencies and Providing Engaging end User Experiences

Resonai

www.resonai.com

- Real Estate Marketing Solutions
- Location-Based Services
- Applications for Indoor Environments
- Property and Infrastructure Management and Maintenance

Company Profile

Resonai is an AI company that has developed disruptive technology for powering machines to operate intelligently in the physical world. Vera is our platform that transforms any commercial real estate property into a fully digitized ecosystem. Our platform creates a highly accurate digital twin with embedded intelligence, allowing devices and applications to better understand, navigate and continuously learn from the environment.

Product Description

Vera converts physical buildings into intelligent 3D twins. Administrators can visualize the entire facility including all people, devices and equipment, manage all access and permissions, and select and deploy mobile applications remotely, to one or multiple locations. Vera applications address key pain points across a building's lifecycle from design and construction to daily maintenance and operations. Vera applications include Vera Maintenance Manager, to automate ticketing and maintenance processes, Vera Concierge, for indoor AR navigation and integrated content, and Vera IoT controller, one mobile app for managing all devices in a building.





Roby.ai Unleashes Your Property Company's Full Potential!

RobyAI

www.roby.ai

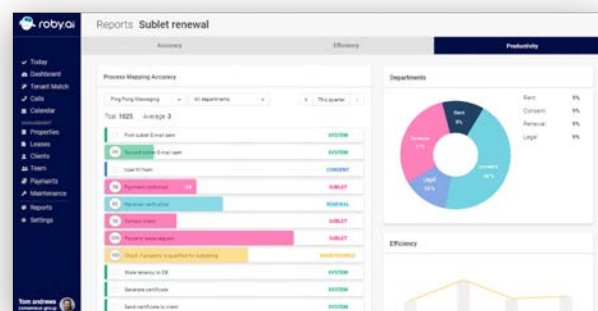
- Project Management and Collaboration Platforms
- Property and Infrastructure Management and Maintenance
- Real Estate Marketing Solutions

Company Profile

Roby is an Artificial Intelligence PropTech startup, born in Tel Aviv, living in London, offering all-in-one seamless and bespoke automation. Driven by a highly talented and growing international team. Roby is custom built, intertwining and integrating wholly or symbiotically into a multitude of business processes by using smart and adaptive automation.

Product Description

Roby streamlines business processes through a flawless, versatile application of Robotic Process Automation offering huge ROI. Tailored to each business, Roby thrives in all corners of the property sector, integrating with, or skipping the need entirely for, manual-driven software. Leading the way in automating and rejuvenating the UK residential property sector, Roby has power to boost commercial, maintenance, hospitality sector processes, and more. Roby is custom, built brick by brick by experts to deliver an all-purpose turnkey automation embedment solution. With optional, powerful, complementary functionality to replace standalone CRM, PMS and Accounting softwares, if hyperspeed is your wish.





SAFEGUARD

Safeguard is Committed to Saving the Lives of Construction Workers Around the World

Safeguard

www.en.safeguard.co.il

- Safety
- Project Management and Collaboration Platforms

Company Profile

Safeguard is committed to saving the lives of workers around the world by delivering real-time insights that can prevent the next safety incident. Safeguard's technology is the only one in the world that combines the 5M factors: Our safety platform is focused on obtaining all safety-relevant data from users, sensors and artificial intelligence-based devices. Our AI technology analyzes data in real time, quantifying safety indicators and delivering control to decision makers at all levels. Safeguard's field-proven track record of innovation and the enormous amount of safety data our solutions collect, positions us to lead the design and development of predictive and preventive measures that will reduce the number of casualties and injuries in work sites.

Product Description

HRGUARD is an end-to-end solution that features facial recognition technology, behavioral analytics and a smart dashboard that provides 360-degree visibility into site workers and resources. Rapidly and nonintrusively identifying people with access authorization to a site, HRGUARD helps mitigate risks across a variety of facilities:

Safety, Real-time visibility & Compliance

- Identify in real-time who's onsite doing what, including subcontractors
- Ensure compliance at all times
- Track safety violations
- Improve safety practices in all the sites you manage
- Monitor and record attendance
- Prevent entrance of unauthorized people
- Manage smart records across sites
- Ensure that personnel are qualified to work in your sites
- Manage digital workers' files on the cloud, including work history, certification, past employment, etc.





Bring Sunlight to Life

Solight

www.solight-energy.com

- Energy Efficiency (Lighting & Air-Conditioning)

Company Profile

Solight develops highly efficient, innovative natural lighting systems. We are ramping up production, installing our commercial and residential solutions globally. Solight is seeking synergistic partners to facilitate rapid growth, and widespread adoption of our technology.

Product Description

The SOLIS collector is both highly efficient, supplying uniform natural lighting, and fully static which makes it both durable and economical to fabricate. Saving up to 40% of electricity consumption, while providing the multiple proven benefits of healthy, natural, full spectrum sunlight.





Water Heating Management and Optimization for Residential Buildings

Sowillo Energy

www.sowillo.com

- Property and Infrastructure Management and Maintenance
- Applications for Indoor Environments
- Energy Efficiency (Lighting & Air-Conditioning)

Company Profile

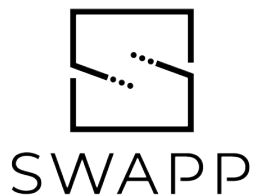
Sowillo Energy is a technological utility company focusing on hot water management for shared multiuser systems with green energy being the primary source of energy. Sowillo develops easy-to-install IoT devices, that upgrade any thermal solar systems to intelligent ones.

Product Description

Sowillo Energy improves solar-thermal systems efficiency by adding own easy-to-install IoT devices and converting any type of such centralized water heating systems to an intelligent one, which optimizes every aspect of water heating systems performance, starting from efficient energy collection and ending with optimal consumption planning by using smart backup systems just to fill the gaps. Operation expenses are further reduced by using predictive maintenance.

Sowillo uses machine learning practices to distribute the hot water by actual needs, to maximize solar energy utilization, predict the maintenance and discover the underproduction.





AI Platform for Site Planning and Renovation of Real-Estate Projects

Swapp

www.swapp.net

- Planning and Design
- Real Estate Marketing Solutions

Company Profile

Using Swapp AI-driven planning solution for site-planning and renovation projects, real estate developers and construction companies benefit an efficient and highly automated planning process, preventing unnecessary delays and eliminating the need for extra meetings. Our algorithms enable our customers to choose the best planning option that maximizes efficiency and minimizes construction costs.

Product Description

Swapp 2 main services for real estate developers:

1. Site-Planning - Assess and plan new projects.

Swapp leverages the power of AI to analyze multiple data sources and automates the mass planning and schematic design, enabling a faster process that minimizes construction costs and maximizes building efficiency.

2. Commercial Renovation Planning:

To avoid losing the tenant, floor plans must be produced quickly and precisely. Swapp floor plans instill confidence within your tenants by presenting them with clear metrics. For example, data that enables them to understand the wellness criteria of your building, how construction costs will be minimized or how space usage will be maximized. All the more so, in light of the Coronavirus pandemic.





Syracuse Enables New and In-Use Tower Cranes Autonomous Operation, Transporting Loads Safer and Faster, Enhancing crane Efficiency

Syracuse

www.syracuse-tech.com

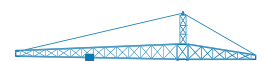
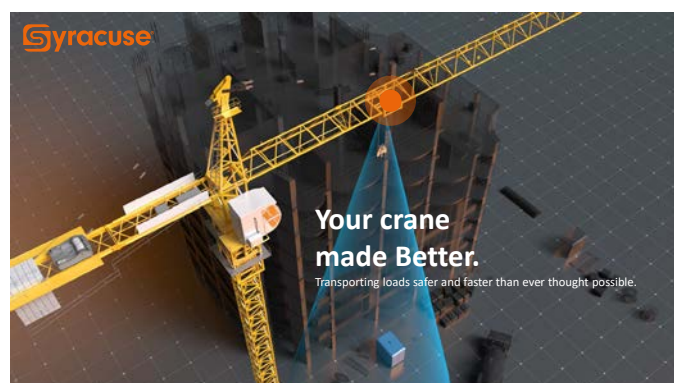
● Drones & Robotics

Company Profile

Founded in late 2018, our team includes experts in the fields of Aerospace & Automotive, advanced robotics and construction. Seed funding of \$1.5M was raised in early 2019, led by Skyline - Israel's largest tower crane rental company, and in mid 2020 an advanced system prototype was installed on a commercial crane. Live construction site testing is scheduled for January 2021.

Product Description

Syracuse provides a complete HW and SW solution incorporating standard crane operator assistance systems such as: Anti-collision, Zoning and Load cameras, augmented with LiDAR and motion sensors. Once installed on the crane, the system monitors the crane, the load and the site, enabling our patented Motion Technology to plot a collision-free optimal trajectory, specifically calculated for the crane performing the lift, the load transported and the real-time construction site. The system can assist crane operators by projecting the lift-plan and providing Obstacle avoidance warning or actively self-operate the crane leaving the human operator to supervise and intervene in "edge cases".



[REGISTR NOW >](#)

The Future of Construction Intelligence

Trusstor

www.trusstor.com

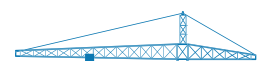
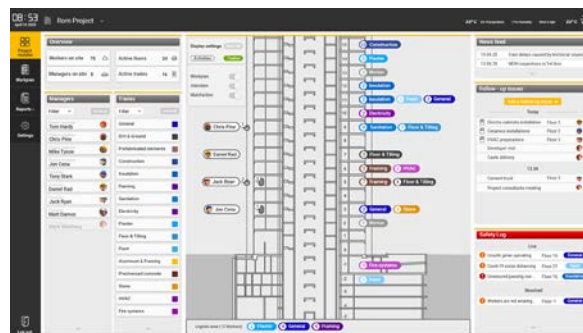
- Safety
- Project Management and Collaboration Platforms
- Location-Based Services

Company Profile

Trusstor is a next-generation on-site command & control system powered by real-time location and site condition sensors, creating a safer and more productive working environment for the construction industry. Lead by professional domain experts and leading technological minds, Trusstor designed its solution to assist the site management without creating additional overhead to their already intensive daily operations. Trusstor's products were designed with hundreds of industry-leading partners with a key vision in mind – simple solutions for complex problems.

Product Description

Displayed by a Real-time dashboard, Trusstor convines data, insights, safety and productivity alerts, and asset locations using a clear user interface, all while executing our key principal of simple solution for complex problems. By developing data collecting abilities we enable quality data gathering and utilization – also referred to as “Construction Intelligence”. Trusstor Reduces the time between an unplanned event to management awareness and minimizes response time from days to minutes. By analyzing on-site data and using pattern recognition algorithms – know in advance a soon to happen delay and prevent it.





Visitt - Your Digital COO

Visitt

www.visitt.io

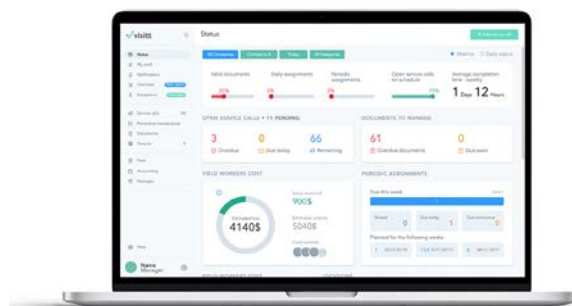
- Project Management and Collaboration Platforms
- Property and Infrastructure Management and Maintenance
- Real Estate Marketing Solutions

Company Profile

Visitt is a digital operations management platform that allows owners/managers to increase operational efficiencies and services by automating day-to-day processes. The system is a cloud application for managing all aspects of management and facility maintenance tasks, field workers' activities and service operations, end-to-end on one dashboard. Visitt Improves the bottom line → You receive more value for the money you spend. Thanks to the digitization, automation, and AI predictions, your dollar spent is being utilized in the best way in your managed facility.

Product Description

Facility managers use Visitt as their digital COO to make their entire day-to-day operations processes simpler, collaborative, and much more productive. Through Visitt's Live dashboard, managers can monitor their entire operations processes status, track their employee's work performance, and know their current tenant's satisfaction level. Visitt Software can be implemented within a day at your assets. Visitt software increases the value-for-money Real Estate owners receive by raising the operations team productivity and performance, which results in an extended assets life cycle and higher service level.





WINT Uses AI to Prevent Leak Damage and Save Water in Buildings and Industry

Wint

www.wint.ai

- Property and Infrastructure Management and Maintenance
- Energy Efficiency (Lighting & Air-Conditioning)

Company Profile

WINT uses AI to prevent damaging water leaks and reduce ongoing consumption in construction sites, operational facilities and industry. WINT monitors water flows to detect anomalies, leaks and waste. Our customers report an end to damaging leaks and savings of 20%-25% of their water consumption.

Product Description

WINT's Water Intelligence devices track water flows, learn normal behaviors and identify anomalies in real time. WINT utilizes the power of artificial intelligence, signal processing, auto-shutoff valves and advanced IoT technologies to eliminate water-leak damage and to reduce ongoing waste. When an issue is detected WINT alerts staff and can automatically shut water off to prevent damage.

The WINT cloud, portal and mobile application provide maintenance staff with the tools required to manage water on the facility, track usage and control water flow and usage throughout the facility.





Indoor Climate Automation for Multi-Room Buildings

Zero Energy Solutions

www.zero.energy

- Property and Infrastructure Management and Maintenance
- Applications for Indoor Environments
- Energy Efficiency (Lighting & Air-Conditioning)
- Clean-Tech

Company Profile

The company deploys wireless climate node networks that enable users to sense, analyze, and automate the climate in every room, through a climate intelligence platform. The Climate Intelligence Network is made up of sensors and controllers, and it considers everything that affects climate comfort, such as external temperature, occupancy, humidity, ventilation, etc., and determines its ideal function according to electricity usage patterns and utility tariffs.

Product Description

Our revolutionary Climate Intelligence Platform has been tested and validated in thousands of controlled zones, mainly in hospitality brands such as Hilton and Marriott, as well as senior living facilities such as NASVH. These sectors were affected by the COVID19 pandemic, so we developed a new IAQ sensor for indoor air quality monitoring and alerting, to help keep those sites safe. Zero Energy Solutions offers its technology in a Climate-as-a-Service model, consisting of a monthly paid subscription for the platform, sensors and top of the line customer support.



TLV ConTech & PropTech

Constructing Tomorrow's
Sustainable Buildings

November 24-25 / 2020 / Israel



This publication is for informational purposes only. While every effort has been made to ensure that the presented information is correct, The Israel Export & International Cooperation Institute assumes no responsibility for damages, financial or otherwise, caused by the information herein.

© November 2020 The Israel Export & International Cooperation Institute
Production: IEICI Media and Communication Division | Design: Nurit shelach

www.export.gov.il